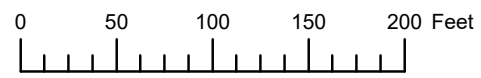


THIS MAP WAS PREPARED FOR ASSESSMENT PURPOSE ONLY

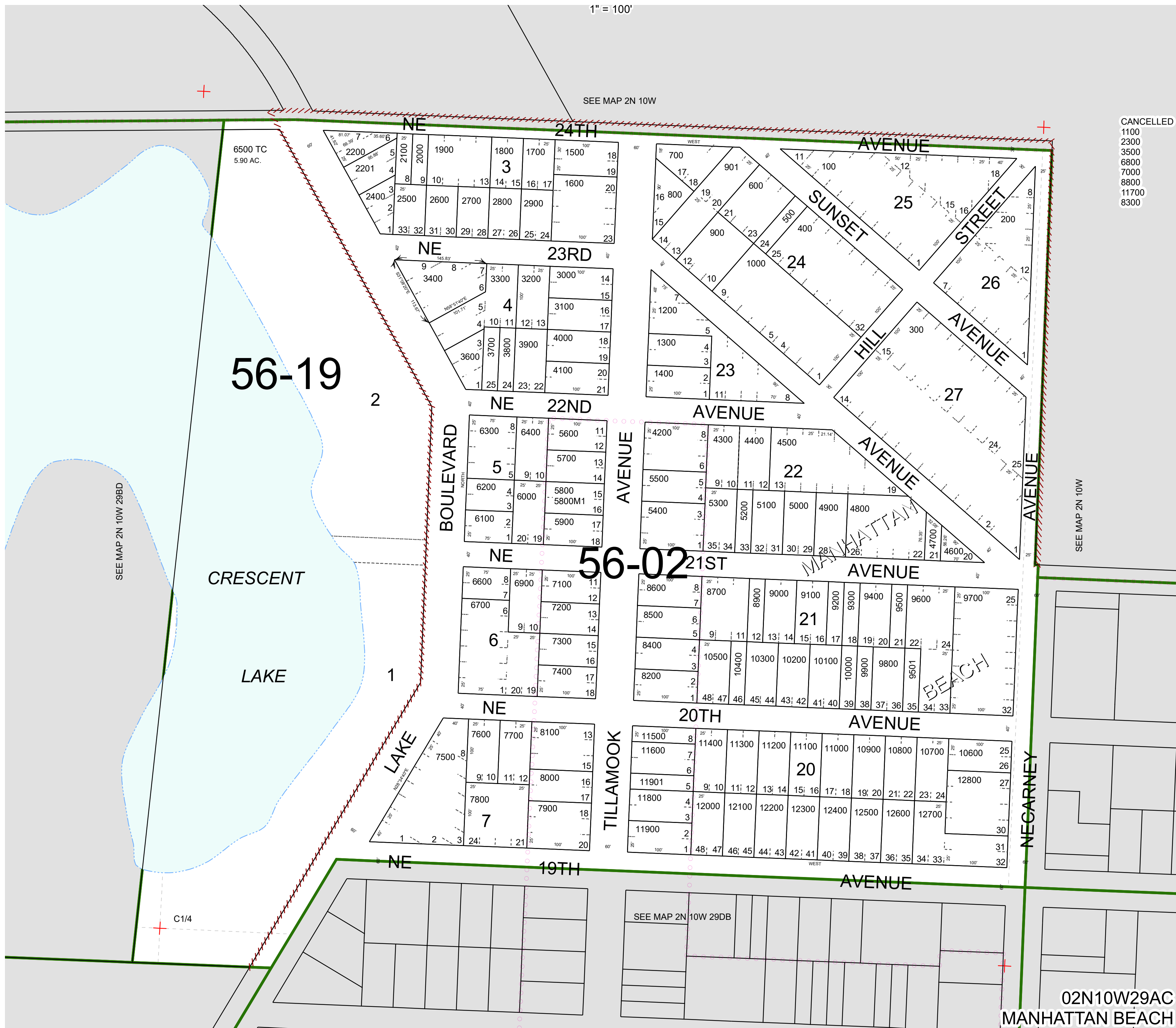


S.W.1/4 N.E.1/4 SEC.29 T.2N. R.10W. W.M.

TILLAMOOK COUNTY

1" = 100'

02N10W29AC  
MANHATTAN BEACH



- CANCELLED
- 1100
- 2300
- 3500
- 6800
- 7000
- 8800
- 11700
- 8300

02N10W29AC  
MANHATTAN BEACH