



# TILLAMOOK COUNTY BOARD OF COMMISSIONERS NOTICE OF MEETING AGENDAS

---

## BOARD OF COMMISSIONERS

**Erin D. Skaar**, Chair  
*eskaar@co.tillamook.or.us*

**Mary Faith Bell**, Vice-Chair  
*mfbell@co.tillamook.or.us*

**David Yamamoto**, Commissioner  
*dyamamoto@co.tillamook.or.us*

## CONTACT

Tillamook County Courthouse  
201 Laurel Avenue  
Tillamook, Oregon 97141  
503.842.3403  
[www.co.tillamook.or.us](http://www.co.tillamook.or.us)

---

## COMMUNITY UPDATE MEETING

**Tuesday, August 29, 2023 at 8:00 a.m.**  
*Teleconference and KTIL-FM at 95.9*

## BOARD MEETING

**Wednesday, August 30, 2023 at 9:00 a.m.**  
**Board of Commissioners' Meeting Room 106**  
*County Courthouse, Teleconference, and Live Video at [tctvonline.com](http://tctvonline.com)*

---

## AGENDAS

### COMMUNITY UPDATE – 2023-08-29 COMMUNITY UPDATE AUDIO.MP4

CALL TO ORDER: Tuesday, August 29, 2023 8:00 a.m.

1. 00:29 Welcome and Board of Commissioners' Roll Call
2. 00:37 Adventist Health Tillamook
3. 02:03 Coastal Caucus
4. 13:17 Tillamook County Community Health Center
5. 16:46 Nehalem Bay Health Center & Pharmacy
6. 18:24 Tillamook Family Counseling Center
7. 21:09 Sheriff's Office
8. 23:47 Board of Commissioners
9. Cities
  - 51:13 Rockaway Beach
  - 56:31 Garibaldi
  - 57:36 Bay City
  - 59:27 Tillamook
  - 1:06:20 South County

**ADJOURN – 9:09 a.m.**

**MEETING – 2023-08-30 BOCC MEETING AUDIO.MP4**

CALL TO ORDER: Wednesday, August 30, 2023 9:01 a.m.

1. 02:02 Welcome & Request to Sign Guest List
2. 02:12 Pledge of Allegiance
3. ----- Public Comment: There were none.
4. 02:37 Non-Agenda Items: There were none.

**PRESENTATION**

5. 02:40 New Shelter Services and Preliminary Site Plans, CARE, Inc./Nicole Vertner, Administrative Director of Business Development, Adventist Health Tillamook

**LEGISLATIVE – ADMINISTRATIVE**

6. 36:50 Discussion and Consideration of the No-Barrier Shelter Preliminary Site Plans and Approval to Clear Site/Nicole Vertner, Administrative Director of Business Development, Adventist Health Tillamook  
  
A motion was made by Commissioner Yamamoto and seconded by Vice-Chair Bell. The motion passed with three ayes. The Board approved the request with an adjustment to the site plan to redefine the lease area.
7. 42:27 Discussion and Consideration of a Memorandum of Understanding with Waterlab Corporation for Well Water Testing Services/Marlene Putman, Administrator; Amy McVeety, Public Health Program Representative, Health & Human Services  
  
A motion was made by Commissioner Yamamoto and seconded by Vice-Chair Bell. The motion passed with three ayes. The Board signed the memorandum of understanding.
8. 56:38 Discussion and Consideration of a Lease Agreement with the City of Rockaway Beach for Lake Lytle Boat Launch/JoAnn Woelfle, Director, Parks Department  
  
A motion was made by Commissioner Yamamoto and seconded by Vice-Chair Bell. The motion passed with three ayes. The Board signed the lease agreement.
9. 1:02:28 Discussion and Consideration of an Order in the Matter of Amending Order #20-051 to Recognize Certain Fee Exemptions Granted by State Statute/JoAnn Woelfle, Director, Parks Department  
  
A motion was made by Commissioner Yamamoto and seconded by Vice-Chair Bell. The motion passed with three ayes. The Board signed Order #23-056.

10. 1:04:40 Discussion and Consideration of a Contract for Services with Tillamook Family Counseling Center Inc. for the Fulfillment of Health Systems Division/Oregon Health Authority 2022 Intergovernmental Agreement for the Financing of Community Mental Health, Substance Use Disorders, and Problem Gambling Services/William K. Sargent, County Counsel
- A motion was made by Commissioner Yamamoto and seconded by Vice-Chair Bell. The motion passed with three ayes. The Board signed the contract.
11. 1:08:56 Discussion and Consideration of Amendment #1 to Oregon Health Authority Contract #180832 for Tort Liability Coverage as a Provider for Psychiatric Security Review Board/William K. Sargent, County Counsel
- A motion was made by Commissioner Yamamoto and seconded by Vice-Chair Bell. The motion passed with three ayes. The Chair signed the amendment.
12. 1:12:45 Discussion and Consideration of an Order in the Matter of Appointing a Person to Fill a Vacancy in the Position of County Clerk/Rachel Hagerty, Chief of Staff
- A motion was made by Commissioner Yamamoto and seconded by Vice-Chair Bell. The motion passed with three ayes. The Board signed Order #23-057.
13. 1:19:01 Discussion and Consideration of Modification #1 to Professional Services Agreement #6374 with DLR Group Architecture & Planning Inc. for the District Attorney's Office Remodel Design Project/Rachel Hagerty, Chief of Staff
- A motion was made by Commissioner Yamamoto and seconded by Vice-Chair Bell. The motion passed with three ayes. The Board signed the modification.
14. 1:21:40 Discussion and Consideration of Task Order 2 to Agreement 1141076 with Portland State University for the Situation Assessment Project/Rachel Hagerty, Chief of Staff
- A motion was made by Commissioner Yamamoto and seconded by Vice-Chair Bell. The motion passed with three ayes. The Chair signed the task order.
15. 1:24:24 Board Concerns: There were none.
16. 1:24:30 Board Announcements

**ADJOURN – 10:26 a.m.**

---

## **JOIN THE BOARD OF COMMISSIONERS' MEETINGS**

The board is committed to community participation and provides opportunity for public attendance during meetings via in-person and teleconference.

- **Community Update Meetings: Tuesdays at 8:00 a.m.**
  - Teleconference: Dial 971-254-3149, Conference ID: 736 023 979#
  - Radio: KTIL-FM at 95.9
  
- **Board Meetings: Wednesdays at 9:00 a.m.**
  - County Courthouse: Board of Commissioners' Meeting Room 106, 201 Laurel Avenue, Tillamook
  - Teleconference: Dial 971-254-3149, Conference ID: 736 023 979#
  - Live Video: [tctvonline.com](http://tctvonline.com)

---

## **MEETING INFORMATION AND RULES**

- Matters for discussion and consideration by the board shall be placed on an agenda prepared by the staff and approved by the board chair. Any commissioner may request items on the agenda.
- Public hearings are formal proceedings publicized through a special public notice issued to media and others. Public hearings held by the board are to provide the board an opportunity to hear from the public about a specific topic. Public hearings are therefore different regarding audience participation at board meetings.
- Commissioners shall be addressed by their title followed by their last name.
- Commissioners shall obtain approval from the chair before speaking or asking questions of staff, presenters, and public. As a courtesy, the chair shall allow an opportunity, by the commissioner who has the floor, to ask immediate follow-up questions.
- A majority of the board shall constitute a quorum and be necessary for the transaction of business.
- All board meeting notices are publicized in accordance with public meeting laws.
- All board meetings shall commence with the Pledge of Allegiance.
- The chair will utilize the gavel as needed to maintain order, commence and adjourn meetings, and signal approval of motions.
- The board reserves the right to recess to executive session as may be required at any time during these meetings, pursuant to ORS 192.660(1).
- The courthouse is accessible to persons with disabilities. If special accommodations are needed for persons with hearing visual, or manual impairments who wish to participate in the meeting, contact (503) 842-3403 at least 24 hours prior to the meeting so that the appropriate communications assistance can be arranged.

---

## **PUBLIC COMMENT**

- Providing public comment is an opportunity for constituents to be heard and express their views to the board.
- The board allows public comment at board meetings during the public comment period designated on the agenda.
- Comments are limited to one per person and per agenda item.
- Comments must be related to the agenda item(s) previously registered to comment on.
- The allotted time for public comments is two minutes per person; this time may not be allotted to another speaker. The chair may, at their sole discretion, further limit or expand the amount of time.
- The public comment opportunity is not a discussion, debate, or dialogue between the speaker and the board, which may or may not respond.
- Members of the public do not have the right to disrupt the meeting; the board may prohibit demonstrations such as booing, hissing, or clapping.
- Remarks containing hate speech, profanity, obscenity, name calling or personal attacks, defamation to a person, people, or organization, or other remarks the board deems inappropriate will not be allowed.
- Failure to follow all rules and procedures may result in not being able to provide public comment and/or being removed from the meeting.

## **In-Person Procedures**

- Sign in before the meeting begins and indicate your desire to provide public comment and which agenda item you would like to comment on. When your name is announced, please come forward to the table placed in front of the dais and for the record, first identify yourself, area of residence, and organization represented, if any.

## **Virtual Procedures**

- Register by sending an email to [publiccomments@co.tillamook.or.us](mailto:publiccomments@co.tillamook.or.us) by 12:00 p.m. on the Tuesday prior to the board meeting. The email must contain all of the following information:
  - Full name, area of residence, and phone number.
  - Agenda item(s), you wish to comment on.
- Once registered, and before the start of the meeting, board staff will email a Microsoft Teams meeting link.
- When logged in to the meeting you must remain muted with your camera off until your name is called, then you unmute and turn on your camera.
- The chair may require those providing virtual comment to turn on their camera while providing comment or testimony.

## **Written Procedures**

- Written comments may be mailed to 201 Laurel Avenue, Tillamook, Oregon 97141 or emailed to: [publiccomments@co.tillamook.or.us](mailto:publiccomments@co.tillamook.or.us).
- Written comments received by 12:00 p.m. on the Tuesday prior to the board meeting will be distributed to the board and posted online. All written comments submitted become part of the permanent public meeting record.

## **AGENDAS**

### **COMMUNITY UPDATE**

CALL TO ORDER: Tuesday, August 29, 2023 8:00 a.m.

1. Welcome and Board of Commissioners' Roll Call
2. Adventist Health Tillamook
3. Coastal Caucus
4. Tillamook County Community Health Center
5. Nehalem Bay Health Center & Pharmacy
6. Tillamook Family Counseling Center
7. Sheriff's Office
8. Emergency Management
9. Board of Commissioners
10. Cities
  - a. Manzanita
  - b. Nehalem
  - c. Wheeler
  - d. Rockaway Beach
  - e. Garibaldi
  - f. Bay City
  - g. Tillamook
  - h. South County

### **ADJOURN**

## **MEETING**

CALL TO ORDER: Wednesday, August 30, 2023 9:00 a.m.

1. Welcome & Request to Sign Guest List
2. Pledge of Allegiance
3. Public Comment
4. Non-Agenda Items

## **PRESENTATION**

5. New Shelter Services and Preliminary Site Plans, CARE, Inc./Dusti Linnell, Chair, CARE Board of Directors; Nicole Vertner, Administrative Director of Business Development, Adventist Health Tillamook

## **LEGISLATIVE – ADMINISTRATIVE**

6. Discussion and Consideration of the No-Barrier Shelter Preliminary Site Plans and Approval to Clear Site/Dusti Linnell, Chair, CARE Board of Directors; Nicole Vertner, Administrative Director of Business Development, Adventist Health Tillamook
7. Discussion and Consideration of a Memorandum of Understanding with Waterlab Corporation for Well Water Testing Services/Marlene Putman, Administrator, Health & Human Services
8. Discussion and Consideration of a Lease Agreement with the City of Rockaway Beach for Lake Lytle Boat Launch/JoAnn Woelfle, Director, Parks Department
9. Discussion and Consideration of an Order in the Matter of Amending Order #20-051 to Recognize Certain Fee Exemptions Granted by State Statute/JoAnn Woelfle, Director, Parks Department
10. Discussion and Consideration of a Contract for Services with Tillamook Family Counseling Center Inc. for the Fulfillment of Health Systems Division/Oregon Health Authority 2022 Intergovernmental Agreement for the Financing of Community Mental Health, Substance Use Disorders, and Problem Gambling Services/William K. Sargent, County Counsel
11. Discussion and Consideration of Amendment #1 to Oregon Health Authority Contract #180832 for Tort Liability Coverage as a Provider for Psychiatric Security Review Board/William K. Sargent, County Counsel
12. Discussion and Consideration of an Order in the Matter of Appointing a Person to Fill a Vacancy in the Position of County Clerk/Rachel Hagerty, Chief of Staff
13. Discussion and Consideration of Modification #1 to Professional Services Agreement #6374 with DLR Group Architecture & Planning Inc. for the District Attorney's Office Remodel Design Project/Rachel Hagerty, Chief of Staff



14. Discussion and Consideration of Task Order 2 to Agreement 1141076 with Portland State University for the Situation Assessment Project/Rachel Hagerty, Chief of Staff
15. Board Concerns
16. Board Announcements

## **ADJOURN**

### **OTHER MEETINGS AND ANNOUNCEMENTS**

The Commissioners will attend a workshop with John Upton for a quarterly report on Tillamook County's Retirement Plan on **Monday, August 28, 2023** at **2:00 p.m.** The teleconference number is 1-719-359-4580, Meeting ID: 893 4472 3646; Passcode: 876096.

The Commissioners will hold a Board Briefing on **Wednesday, August 30, 2023** at **2:00 p.m.** to discuss weekly Commissioner updates. The meeting will be held in the Board of Commissioners' Meeting Room 106 in the Tillamook County Courthouse, 201 Laurel Avenue, Tillamook, Oregon. The teleconference number is 1-971-254-3149, Conference ID: 736 023 979#.

**Labor Day** is an observed holiday for the County and the Oregon State Circuit Court. All County offices in the Tillamook County Courthouse, Tillamook County Library, administrative offices in the Jail and Justice Facility, Public Works Department, Department of Community Development, Surveyor's Office, and the Health and Human Services Department and clinics will be **CLOSED** on **Monday, September 4, 2023**.

# BOARD OF COMMISSIONERS' BOARD MEETING

Wednesday, August 30, 2023

	Present	Absent		Present	Absent
Erin Skaar	<u>✓</u>	_____	Rachel Hagerty	<u>✓</u>	_____
Mary Faith Bell	<u>✓</u>	_____	Bill Sargent	<u>✓</u>	_____
David Yamamoto	<u>✓</u>	_____			

PLEASE PRINT

<u>Name</u>	<u>Email or Address</u>	<u>Item of Interest</u>
Dusti Linnell	dusti.linnell@oregonskare.cdr	CARE
Mareliza dejesus	dejesumr@ah.org	CARE
Andrea Goss	agoss97107@gmail.com	CARE
Nicole Vertner	vertnene01@ah.org	CARE
Frank Hanna-Williams	frankhw@hccr.org	CARE / Items 10-11 -
Christy Biggs	cbiggs@co.tillamook.or.us	Clerk
Alicia Siler	asiler@careinc.org	CARE
Andrew O'Connor	AOConnor@careinc.org	CARE

(Please use reverse if necessary)

# TILLAMOOK COUNTY BOARD OF COMMISSIONERS' MEETING

WEDNESDAY, August 30, 2023

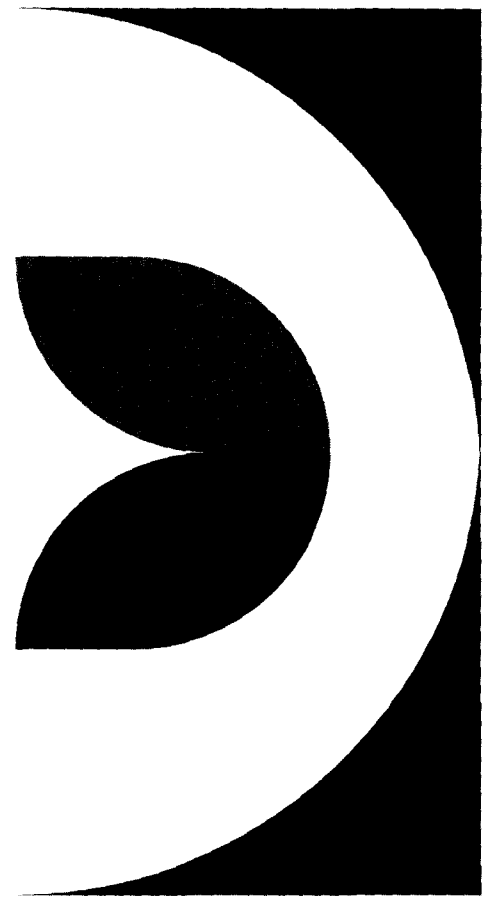
## PUBLIC COMMENT SIGN-IN SHEET

PLEASE PRINT

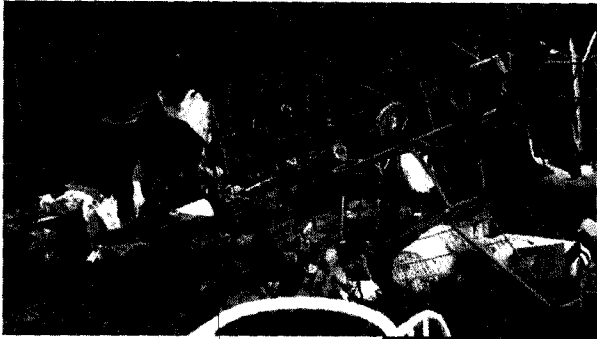
NAME	AREA OF RESIDENCE	NAME OF ORGANIZATION (IF ANY)	AGENDA ITEM
<i>There were no sign-ups</i>			

# New Shelter Services

CARE, Inc.



# Impacts of Homeless Camps



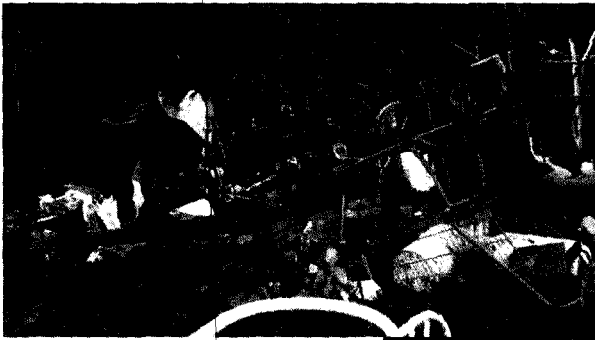
## Other Impacts

Right to Rest Bill

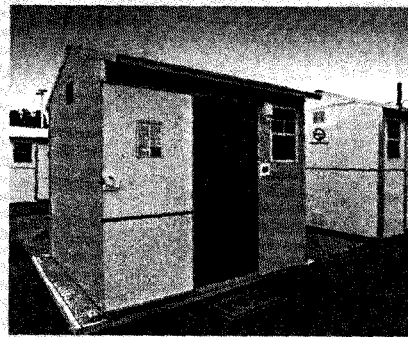
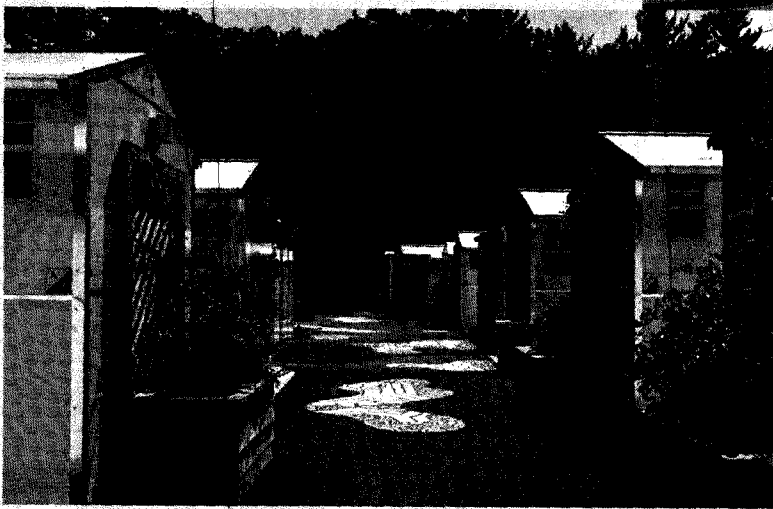
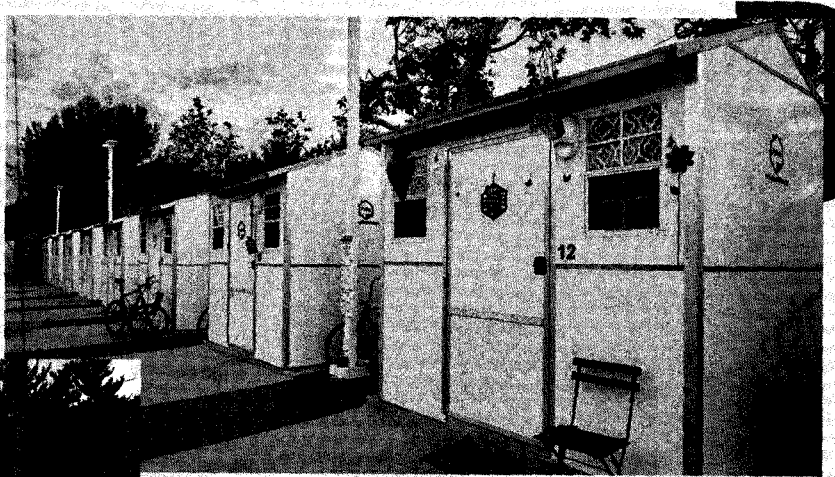
Emerging lawsuits  
against cities and  
counties

Recommendations by  
Legal Counsel not to  
move people without  
a minimum of two  
places to move them

# Impacts of Homeless Camps



# Vision





# Shelter Options in Tillamook

TERM	DEFINITION	AVAILABLE IN TILLAMOOK	DESCRIPTION
No-barrier Shelter	Night by night shelter with no preconditions for entry.	CARE Warming Center	<ul style="list-style-type: none"> <li>Available in winter months during periods of inclement weather (below 32°F)</li> </ul>
Low-barrier Shelter	Temporary living accommodation with some preconditions for entry providing stability while progressing toward housing readiness or awaiting permanent housing.	CARE Micro-Shelters  Helping Hands Hope Center	<ul style="list-style-type: none"> <li>Six two-bed units. Entry requires agreement to extensive case management.</li> <li>Up to 30 nights of shelter before required to enter reentry program. Sobriety a requirement for entry.</li> </ul>
Transitional Housing	Long-term shelter with programmatic conditions for entry facilitating the movement of people and households experiencing homelessness to permanent housing	Helping Hands Reentry Program  Tides of Change Pacific House Shelter	<ul style="list-style-type: none"> <li>Sobriety a requirement for entry. Must comply with an Individual Development Plan to advance employment goals, independent living, and recovery.</li> <li>Confidential emergency shelter for survivors and children fleeing intimate partner violence.</li> </ul>



# Shelters Service Overview

## Current

- Six micro shelters
- Occasional warming shelter
- Tents, tarps, sleeping bags

## Fall 2023

- Night to night overnight shelter 365 days a year
- Four new longer-term shelters (1-2 people)
- Two new longer-term family shelters (up to 4 people)
- One new double bathroom facility
- One ADA bathroom
- 24/7/365 peer support
- Supported employment program

## Fall 2024

- Navigation Center
  - Three bathrooms
  - Washer and dryer
  - Full kitchen
  - Office workstations
- Ten new longer-term shelters
- Four new longer-term family shelters
- Additional bathrooms
- New ADA bathroom facility
- Additional laundry facility

# Key Locations

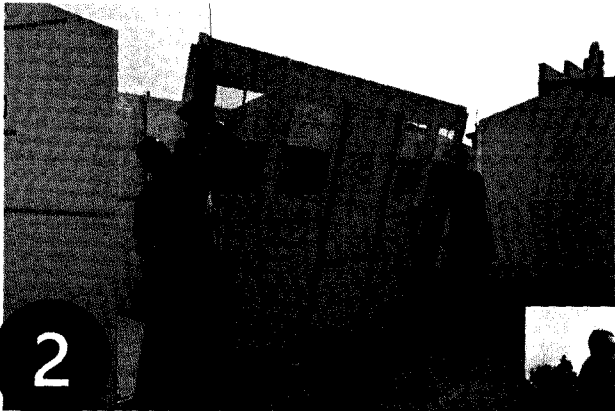


# Location

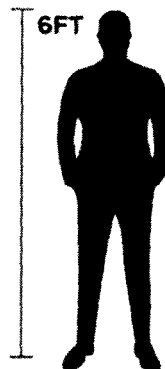
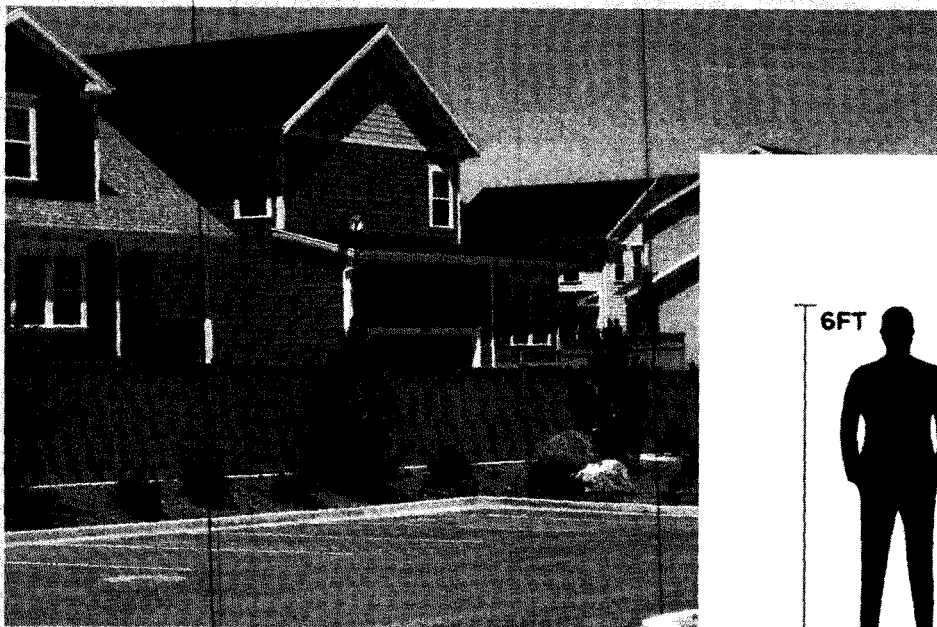
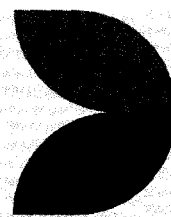




# Pallet Shelters



# Fencing Plans

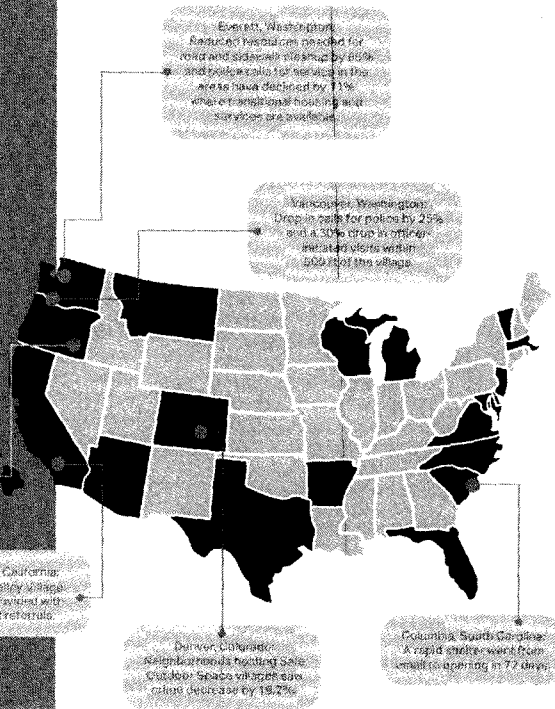


**3800+**  
SHELTERS BUILT

**100**  
VILLAGES BUILT

**19 / 74**  
STATES CITIES

*Data represents all-time totals*



# Examples across the country



**Vancouver, Washington:**  
Drop in calls for police by 25%  
and a 30% drop in officer-  
initiated visits within  
500 ft of the village.

**Columbia, South Carolina:**  
A rapid shelter went from  
email to opening in 72 days.

**Denver, Colorado:**  
Neighborhoods hosting Safe  
Outdoor Space villages saw  
crime decrease by 19.2%.

**Los Angeles, California:**  
Hope of the Valley Village:  
721 people provided with  
employment referrals.

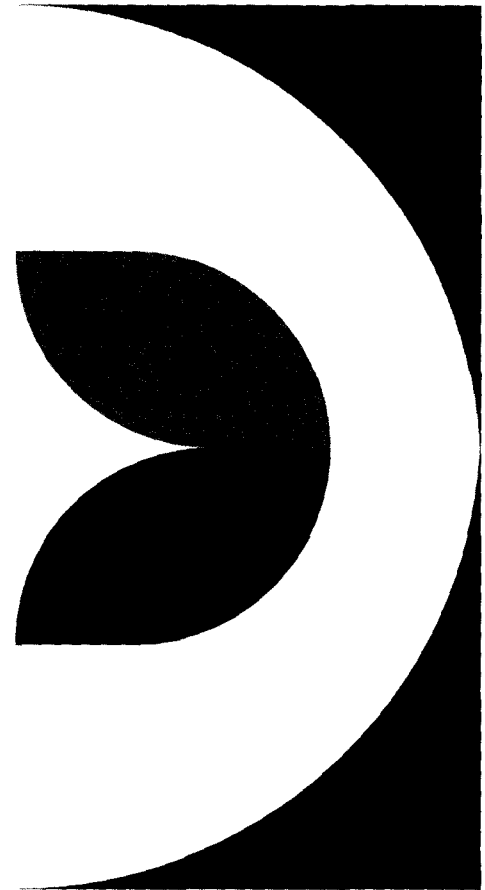
**Dallas, Oregon:**  
62 people transitioned  
to permanent housing.

**Everett, Washington:**  
Reduced resources needed for  
road and sidewalk cleanup by 66%  
and police calls for service in the  
areas have declined by 11%  
where transitional housing and  
services are available.

# Questions

CARE

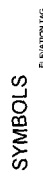
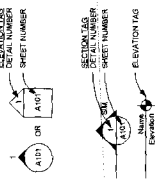
[www.careinc.org](http://www.careinc.org)



# CARE Shelter

CARE Inc  
2310 First St. Suite 2  
Tillamook, Oregon 97141

## SYMBOLS



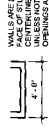
## LINETYPES



## MATERIALS



## DIMENSIONS



## ABBREVIATIONS

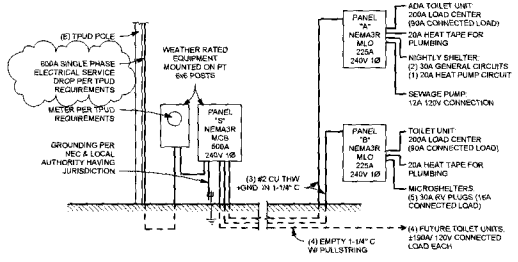
- 1. 1/4" ANG
- 2. 1/2" ANG
- 3. 3/4" ANG
- 4. 1" ANG
- 5. 1 1/2" ANG
- 6. 2" ANG
- 7. 3" ANG
- 8. 4" ANG
- 9. 6" ANG
- 10. 8" ANG
- 11. 10" ANG
- 12. 12" ANG
- 13. 14" ANG
- 14. 16" ANG
- 15. 18" ANG
- 16. 20" ANG
- 17. 24" ANG
- 18. 30" ANG
- 19. 36" ANG
- 20. 42" ANG
- 21. 48" ANG
- 22. 54" ANG
- 23. 60" ANG
- 24. 72" ANG
- 25. 84" ANG
- 26. 96" ANG
- 27. 108" ANG
- 28. 120" ANG
- 29. 144" ANG
- 30. 168" ANG
- 31. 192" ANG
- 32. 216" ANG
- 33. 240" ANG
- 34. 288" ANG
- 35. 336" ANG
- 36. 384" ANG
- 37. 432" ANG
- 38. 480" ANG
- 39. 528" ANG
- 40. 576" ANG
- 41. 624" ANG
- 42. 672" ANG
- 43. 720" ANG
- 44. 768" ANG
- 45. 816" ANG
- 46. 864" ANG
- 47. 912" ANG
- 48. 960" ANG
- 49. 1008" ANG
- 50. 1056" ANG
- 51. 1104" ANG
- 52. 1152" ANG
- 53. 1200" ANG
- 54. 1248" ANG
- 55. 1296" ANG
- 56. 1344" ANG
- 57. 1392" ANG
- 58. 1440" ANG
- 59. 1488" ANG
- 60. 1536" ANG
- 61. 1584" ANG
- 62. 1632" ANG
- 63. 1680" ANG
- 64. 1728" ANG
- 65. 1776" ANG
- 66. 1824" ANG
- 67. 1872" ANG
- 68. 1920" ANG
- 69. 1968" ANG
- 70. 2016" ANG
- 71. 2064" ANG
- 72. 2112" ANG
- 73. 2160" ANG
- 74. 2208" ANG
- 75. 2256" ANG
- 76. 2304" ANG
- 77. 2352" ANG
- 78. 2400" ANG
- 79. 2448" ANG
- 80. 2496" ANG
- 81. 2544" ANG
- 82. 2592" ANG
- 83. 2640" ANG
- 84. 2688" ANG
- 85. 2736" ANG
- 86. 2784" ANG
- 87. 2832" ANG
- 88. 2880" ANG
- 89. 2928" ANG
- 90. 2976" ANG
- 91. 3024" ANG
- 92. 3072" ANG
- 93. 3120" ANG
- 94. 3168" ANG
- 95. 3216" ANG
- 96. 3264" ANG
- 97. 3312" ANG
- 98. 3360" ANG
- 99. 3408" ANG
- 100. 3456" ANG
- 101. 3504" ANG
- 102. 3552" ANG
- 103. 3600" ANG
- 104. 3648" ANG
- 105. 3696" ANG
- 106. 3744" ANG
- 107. 3792" ANG
- 108. 3840" ANG
- 109. 3888" ANG
- 110. 3936" ANG
- 111. 3984" ANG
- 112. 4032" ANG
- 113. 4080" ANG
- 114. 4128" ANG
- 115. 4176" ANG
- 116. 4224" ANG
- 117. 4272" ANG
- 118. 4320" ANG
- 119. 4368" ANG
- 120. 4416" ANG
- 121. 4464" ANG
- 122. 4512" ANG
- 123. 4560" ANG
- 124. 4608" ANG
- 125. 4656" ANG
- 126. 4704" ANG
- 127. 4752" ANG
- 128. 4800" ANG
- 129. 4848" ANG
- 130. 4896" ANG
- 131. 4944" ANG
- 132. 4992" ANG
- 133. 5040" ANG
- 134. 5088" ANG
- 135. 5136" ANG
- 136. 5184" ANG
- 137. 5232" ANG
- 138. 5280" ANG
- 139. 5328" ANG
- 140. 5376" ANG
- 141. 5424" ANG
- 142. 5472" ANG
- 143. 5520" ANG
- 144. 5568" ANG
- 145. 5616" ANG
- 146. 5664" ANG
- 147. 5712" ANG
- 148. 5760" ANG
- 149. 5808" ANG
- 150. 5856" ANG
- 151. 5904" ANG
- 152. 5952" ANG
- 153. 6000" ANG
- 154. 6048" ANG
- 155. 6096" ANG
- 156. 6144" ANG
- 157. 6192" ANG
- 158. 6240" ANG
- 159. 6288" ANG
- 160. 6336" ANG
- 161. 6384" ANG
- 162. 6432" ANG
- 163. 6480" ANG
- 164. 6528" ANG
- 165. 6576" ANG
- 166. 6624" ANG
- 167. 6672" ANG
- 168. 6720" ANG
- 169. 6768" ANG
- 170. 6816" ANG
- 171. 6864" ANG
- 172. 6912" ANG
- 173. 6960" ANG
- 174. 7008" ANG
- 175. 7056" ANG
- 176. 7104" ANG
- 177. 7152" ANG
- 178. 7200" ANG
- 179. 7248" ANG
- 180. 7296" ANG
- 181. 7344" ANG
- 182. 7392" ANG
- 183. 7440" ANG
- 184. 7488" ANG
- 185. 7536" ANG
- 186. 7584" ANG
- 187. 7632" ANG
- 188. 7680" ANG
- 189. 7728" ANG
- 190. 7776" ANG
- 191. 7824" ANG
- 192. 7872" ANG
- 193. 7920" ANG
- 194. 7968" ANG
- 195. 8016" ANG
- 196. 8064" ANG
- 197. 8112" ANG
- 198. 8160" ANG
- 199. 8208" ANG
- 200. 8256" ANG
- 201. 8304" ANG
- 202. 8352" ANG
- 203. 8400" ANG
- 204. 8448" ANG
- 205. 8496" ANG
- 206. 8544" ANG
- 207. 8592" ANG
- 208. 8640" ANG
- 209. 8688" ANG
- 210. 8736" ANG
- 211. 8784" ANG
- 212. 8832" ANG
- 213. 8880" ANG
- 214. 8928" ANG
- 215. 8976" ANG
- 216. 9024" ANG
- 217. 9072" ANG
- 218. 9120" ANG
- 219. 9168" ANG
- 220. 9216" ANG
- 221. 9264" ANG
- 222. 9312" ANG
- 223. 9360" ANG
- 224. 9408" ANG
- 225. 9456" ANG
- 226. 9504" ANG
- 227. 9552" ANG
- 228. 9600" ANG
- 229. 9648" ANG
- 230. 9696" ANG
- 231. 9744" ANG
- 232. 9792" ANG
- 233. 9840" ANG
- 234. 9888" ANG
- 235. 9936" ANG
- 236. 9984" ANG
- 237. 10032" ANG
- 238. 10080" ANG
- 239. 10128" ANG
- 240. 10176" ANG
- 241. 10224" ANG
- 242. 10272" ANG
- 243. 10320" ANG
- 244. 10368" ANG
- 245. 10416" ANG
- 246. 10464" ANG
- 247. 10512" ANG
- 248. 10560" ANG
- 249. 10608" ANG
- 250. 10656" ANG
- 251. 10704" ANG
- 252. 10752" ANG
- 253. 10800" ANG
- 254. 10848" ANG
- 255. 10896" ANG
- 256. 10944" ANG
- 257. 10992" ANG
- 258. 11040" ANG
- 259. 11088" ANG
- 260. 11136" ANG
- 261. 11184" ANG
- 262. 11232" ANG
- 263. 11280" ANG
- 264. 11328" ANG
- 265. 11376" ANG
- 266. 11424" ANG
- 267. 11472" ANG
- 268. 11520" ANG
- 269. 11568" ANG
- 270. 11616" ANG
- 271. 11664" ANG
- 272. 11712" ANG
- 273. 11760" ANG
- 274. 11808" ANG
- 275. 11856" ANG
- 276. 11904" ANG
- 277. 11952" ANG
- 278. 12000" ANG
- 279. 12048" ANG
- 280. 12096" ANG
- 281. 12144" ANG
- 282. 12192" ANG
- 283. 12240" ANG
- 284. 12288" ANG
- 285. 12336" ANG
- 286. 12384" ANG
- 287. 12432" ANG
- 288. 12480" ANG
- 289. 12528" ANG
- 290. 12576" ANG
- 291. 12624" ANG
- 292. 12672" ANG
- 293. 12720" ANG
- 294. 12768" ANG
- 295. 12816" ANG
- 296. 12864" ANG
- 297. 12912" ANG
- 298. 12960" ANG
- 299. 13008" ANG
- 300. 13056" ANG
- 301. 13104" ANG
- 302. 13152" ANG
- 303. 13200" ANG
- 304. 13248" ANG
- 305. 13296" ANG
- 306. 13344" ANG
- 307. 13392" ANG
- 308. 13440" ANG
- 309. 13488" ANG
- 310. 13536" ANG
- 311. 13584" ANG
- 312. 13632" ANG
- 313. 13680" ANG
- 314. 13728" ANG
- 315. 13776" ANG
- 316. 13824" ANG
- 317. 13872" ANG
- 318. 13920" ANG
- 319. 13968" ANG
- 320. 14016" ANG
- 321. 14064" ANG
- 322. 14112" ANG
- 323. 14160" ANG
- 324. 14208" ANG
- 325. 14256" ANG
- 326. 14304" ANG
- 327. 14352" ANG
- 328. 14400" ANG
- 329. 14448" ANG
- 330. 14496" ANG
- 331. 14544" ANG
- 332. 14592" ANG
- 333. 14640" ANG
- 334. 14688" ANG
- 335. 14736" ANG
- 336. 14784" ANG
- 337. 14832" ANG
- 338. 14880" ANG
- 339. 14928" ANG
- 340. 14976" ANG
- 341. 15024" ANG
- 342. 15072" ANG
- 343. 15120" ANG
- 344. 15168" ANG
- 345. 15216" ANG
- 346. 15264" ANG
- 347. 15312" ANG
- 348. 15360" ANG
- 349. 15408" ANG
- 350. 15456" ANG
- 351. 15504" ANG
- 352. 15552" ANG
- 353. 15600" ANG
- 354. 15648" ANG
- 355. 15696" ANG
- 356. 15744" ANG
- 357. 15792" ANG
- 358. 15840" ANG
- 359. 15888" ANG
- 360. 15936" ANG
- 361. 15984" ANG
- 362. 16032" ANG
- 363. 16080" ANG
- 364. 16128" ANG
- 365. 16176" ANG
- 366. 16224" ANG
- 367. 16272" ANG
- 368. 16320" ANG
- 369. 16368" ANG
- 370. 16416" ANG
- 371. 16464" ANG
- 372. 16512" ANG
- 373. 16560" ANG
- 374. 16608" ANG
- 375. 16656" ANG
- 376. 16704" ANG
- 377. 16752" ANG
- 378. 16800" ANG
- 379. 16848" ANG
- 380. 16896" ANG
- 381. 16944" ANG
- 382. 16992" ANG
- 383. 17040" ANG
- 384. 17088" ANG
- 385. 17136" ANG
- 386. 17184" ANG
- 387. 17232" ANG
- 388. 17280" ANG
- 389. 17328" ANG
- 390. 17376" ANG
- 391. 17424" ANG
- 392. 17472" ANG
- 393. 17520" ANG
- 394. 17568" ANG
- 395. 17616" ANG
- 396. 17664" ANG
- 397. 17712" ANG
- 398. 17760" ANG
- 399. 17808" ANG
- 400. 17856" ANG
- 401. 17904" ANG
- 402. 17952" ANG
- 403. 18000" ANG
- 404. 18048" ANG
- 405. 18096" ANG
- 406. 18144" ANG
- 407. 18192" ANG
- 408. 18240" ANG
- 409. 18288" ANG
- 410. 18336" ANG
- 411. 18384" ANG
- 412. 18432" ANG
- 413. 18480" ANG
- 414. 18528" ANG
- 415. 18576" ANG
- 416. 18624" ANG
- 417. 18672" ANG
- 418. 18720" ANG
- 419. 18768" ANG
- 420. 18816" ANG
- 421. 18864" ANG
- 422. 18912" ANG
- 423. 18960" ANG
- 424. 19008" ANG
- 425. 19056" ANG
- 426. 19104" ANG
- 427. 19152" ANG
- 428. 19200" ANG
- 429. 19248" ANG
- 430. 19296" ANG
- 431. 19344" ANG
- 432. 19392" ANG
- 433. 19440" ANG
- 434. 19488" ANG
- 435. 19536" ANG
- 436. 19584" ANG
- 437. 19632" ANG
- 438. 19680" ANG
- 439. 19728" ANG
- 440. 19776" ANG
- 441. 19824" ANG
- 442. 19872" ANG
- 443. 19920" ANG
- 444. 19968" ANG
- 445. 20016" ANG
- 446. 20064" ANG
- 447. 20112" ANG
- 448. 20160" ANG
- 449. 20208" ANG
- 450. 20256" ANG
- 451. 20304" ANG
- 452. 20352" ANG
- 453. 20400" ANG
- 454. 20448" ANG
- 455. 20496" ANG
- 456. 20544" ANG
- 457. 20592" ANG
- 458. 20640" ANG
- 459. 20688" ANG
- 460. 20736" ANG
- 461. 20784" ANG
- 462. 20832" ANG
- 463. 20880" ANG
- 464. 20928" ANG
- 465. 20976" ANG
- 466. 21024" ANG
- 467. 21072" ANG
- 468. 21120" ANG
- 469. 21168" ANG
- 470. 21216" ANG
- 471. 21264" ANG
- 472. 21312" ANG
- 473. 21360" ANG
- 474. 21408" ANG
- 475. 21456" ANG
- 476. 21504" ANG
- 477. 21552" ANG
- 478. 21600" ANG
- 479. 21648" ANG
- 480. 21696" ANG
- 481. 21744" ANG
- 482. 21792" ANG
- 483. 21840" ANG
- 484. 21888" ANG
- 485. 21936" ANG
- 486. 21984" ANG
- 487. 22032" ANG
- 488. 22080" ANG
- 489. 22128" ANG
- 490. 22176" ANG
- 491. 22224" ANG
- 492. 22272" ANG
- 493. 22320" ANG
- 494. 22368" ANG
- 495. 22416" ANG
- 496. 22464" ANG
- 497. 22512" ANG
- 498. 22560" ANG
- 499. 22608" ANG
- 500. 22656" ANG
- 501. 22704" ANG
- 502. 22752" ANG
- 503. 22800" ANG
- 504. 22848" ANG
- 505. 22896" ANG
- 506. 22944" ANG
- 507. 22992" ANG
- 508. 23040" ANG
- 509. 23088" ANG
- 510. 23136" ANG
- 511. 23184" ANG
- 512. 23232" ANG
- 513. 23280" ANG
- 514. 23328" ANG
- 515. 23376" ANG
- 516. 23424" ANG
- 517. 23472" ANG
- 518. 23520" ANG
- 519. 23568" ANG
- 520. 23616" ANG
- 521. 23664" ANG
- 522. 23712" ANG
- 523. 23760" ANG
- 524. 23808" ANG
- 525. 23856" ANG
- 526. 23904" ANG
- 527. 23952" ANG
- 528. 24000" ANG
- 529. 24048" ANG
- 530. 24096" ANG
- 531. 24144" ANG
- 532. 24192" ANG
- 533. 24240" ANG
- 534. 24288" ANG
- 535. 24336" ANG
- 536. 24384" ANG
- 537. 24432" ANG
- 538. 24480" ANG
- 539. 24528" ANG
- 540. 24576" ANG
- 541. 24624" ANG
- 542. 24672" ANG
- 543. 24720" ANG
- 544. 24768" ANG
- 545. 24816" ANG
- 546. 24864" ANG
- 547. 24912" ANG
- 548. 24960" ANG
- 549. 25008" ANG
- 550. 25056" ANG
- 551. 25104" ANG
- 552. 25152" ANG
- 553. 25200" ANG
- 554. 25248" ANG
- 555. 25296" ANG
- 556. 25344" ANG
- 557. 25392" ANG
- 558. 25440" ANG
- 559. 25488" ANG
- 560. 25536" ANG
- 561. 25584" ANG
- 562. 25632" ANG
- 563. 25680" ANG
- 564. 25728" ANG
- 565. 25776" ANG
- 566. 25824" ANG
- 567. 25872" ANG
- 568. 25920" ANG
- 569. 25968" ANG
- 570. 26016" ANG
- 571. 26064" ANG
- 572. 26112" ANG
- 573. 26160" ANG
- 574. 26208" ANG
- 575. 26256" ANG
- 576. 26304" ANG
- 577. 26352" ANG
- 578. 26400" ANG
- 579. 26448" ANG
- 580. 26496" ANG
- 581. 26544" ANG
- 582. 26592" ANG
- 583. 26640" ANG
- 584. 26688" ANG
- 585. 26736" ANG
- 586. 26784" ANG
- 587. 26832" ANG
- 588. 26880" ANG
- 589. 26928" ANG
- 590. 26976" ANG
- 591. 27024" ANG
- 592. 27072" ANG
- 593. 27120" ANG
- 594. 27168" ANG
- 595. 27216" ANG
- 596. 27264" ANG
- 597. 27312" ANG
- 598. 27360" ANG
- 599. 27408" ANG
- 600. 27456" ANG
- 601. 27504" ANG
- 602. 27552" ANG
- 603. 27600" ANG
- 604. 27648" ANG
- 605. 27696" ANG
- 606. 27744" ANG
- 607. 27792" ANG
- 608. 27840" ANG
- 609. 27888" ANG
- 610. 27936" ANG
- 611. 27984" ANG
- 612. 28032" ANG
- 613. 28080" ANG
- 614. 28128" ANG
- 615. 28176" ANG
- 616. 28224" ANG
- 617. 28272" ANG
- 618. 28320" ANG
- 619. 28368" ANG
- 620. 28416" ANG
- 621. 28464" ANG
- 622. 28512" ANG
- 623. 28560" ANG
- 624. 28608" ANG
- 625. 28656" ANG
- 626. 28704" ANG
- 627. 28752" ANG
- 628. 28800" ANG
- 629. 28848" ANG
- 630. 28896" ANG
- 631. 28944" ANG
- 632. 28992" ANG
- 633. 29040" ANG
- 634. 29088" ANG
- 635. 29136" ANG
- 636. 29184" ANG
- 637. 29232" ANG
- 638. 29280" ANG
- 639. 29328" ANG
- 640. 29376" ANG
- 641. 29424" ANG
- 642. 29472" ANG
- 643. 29520" ANG
- 644. 29568" ANG
- 645. 29616" ANG
- 646. 29664" ANG
- 647. 29712" ANG
- 648. 29760" ANG
- 649. 29808" ANG
- 650. 29856" ANG
- 651. 29904" ANG
- 652. 29952" ANG
- 653. 30000" ANG
- 654. 300





**VIRIDIAN**  
ARCHITECTURE

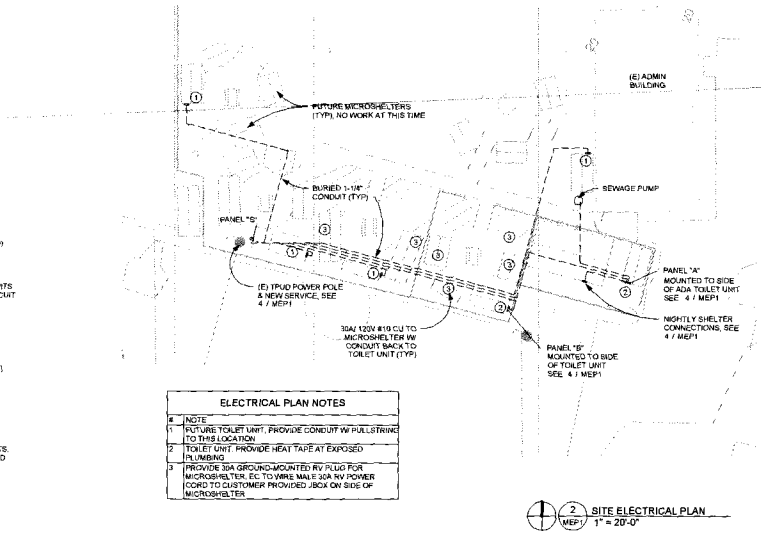
35820 USR01 Northern Oregon 07/13/11  
603.272.1761 www.viridianjpa.com



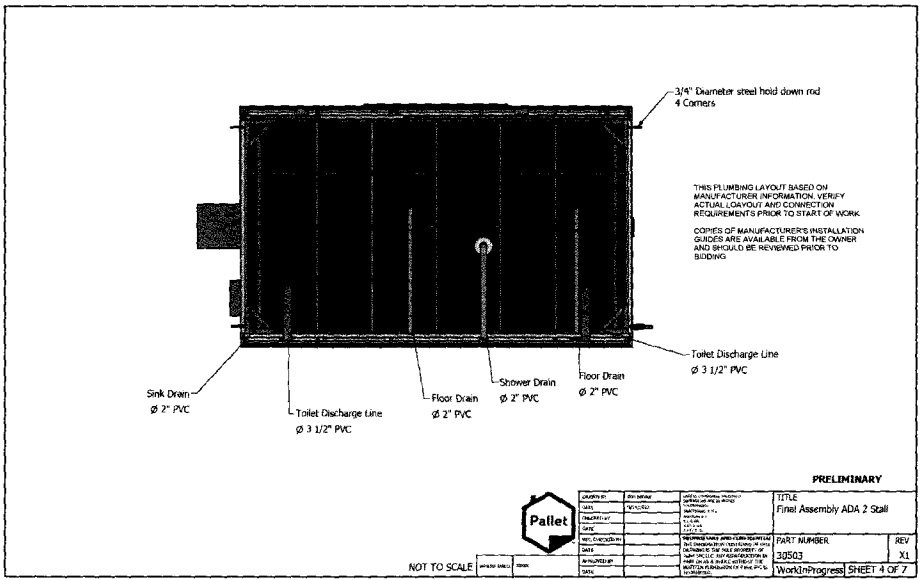
ELECTRICIAN TO COORDINATE REQUIREMENTS WITH LOCAL UTILITY AND PROVIDE ALL SYSTEMS & EQUIPMENT REQUIRED FOR A COMPLETE INSTALLATION

**4 ELECTRICAL ONE-LINE DIAGRAM**  
MEP1/ NOT TO SCALE

- ELECTRICAL PLAN NOTES**
- NOTE
  - FUTURE TOILET UNIT. PROVIDE CONDUIT W/ PULLSTRING TO THIS LOCATION
  - TOILET UNIT. PROVIDE HEAT TAPE AT EXPOSED PLUMBING
  - PROVIDE 30A GROUND-MOUNTED RV PLUG FOR MICRO-SHELTER. EC TO WIRE MAKE 30A RV POWER CORD TO CUSTOMER PROVIDED JACK ON SIDE OF MICRO-SHELTER



**2 SITE ELECTRICAL PLAN**  
MEP1/ 1" = 20'-0"



THIS PLUMBING LAYOUT BASED ON MANUFACTURER'S INFORMATION. VERIFY ACTUAL LAYOUT AND CONNECTION REQUIREMENTS PRIOR TO START OF WORK. COPIES OF MANUFACTURER'S INSTALLATION GUIDES ARE AVAILABLE FROM THE OWNER AND SHOULD BE REVIEWED PRIOR TO BIDDING.

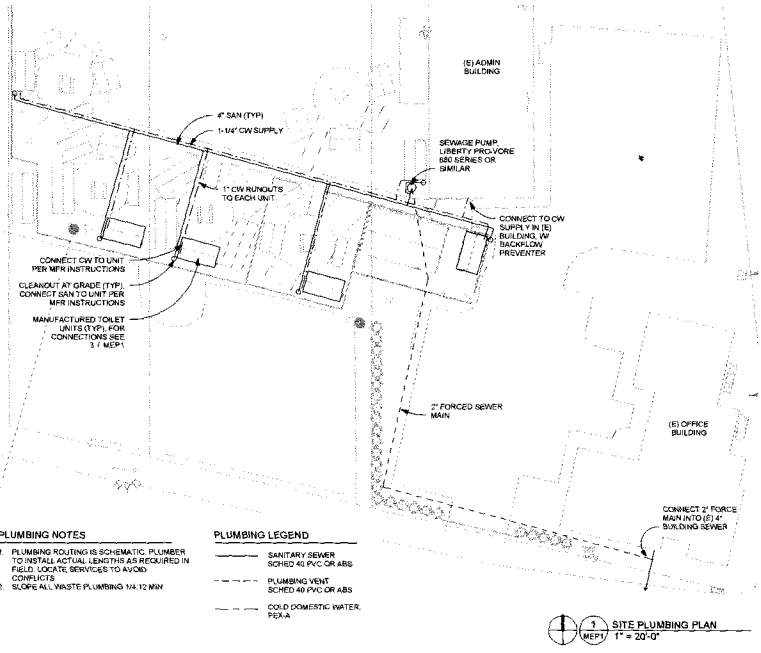
**PRELIMINARY**



DATE	BY	DESCRIPTION	TITLE	PART NUMBER	REV
07/13/11	MEP1	Final Assembly ADA 2 Stall	Final Assembly ADA 2 Stall	30503	X1

NOT TO SCALE

**3 TOILET UNIT CONNECTIONS**  
MEP1/ NOT TO SCALE



- PLUMBING NOTES**
- PLUMBING ROUTING IS SCHEMATIC. PLUMBER TO INSTALL ACTUAL LENTHS AS REQUIRED IN FIELD. LOCATE SERVICES TO AVOID CONFLICTS
  - SCORE ALL WASTE PLUMBING 1/4" MIN

- PLUMBING LEGEND**
- SANITARY SEWER SCHED 40 PVC OR ABS
  - PLUMBING VENT SCHED 40 PVC OR ABS
  - COLD DOMESTIC WATER PE-XA

**1 SITE PLUMBING PLAN**  
MEP1/ 1" = 20'-0"

CARE Shelter  
CARE Inc  
2310 First St, Suite 2  
Tillamook, Oregon 97141

No.	Description	Date	By	Checked

**PRELIMINARY**  
NOT FOR CONSTRUCTION

Project number: 2228

**MEP1**

MEP SYSTEMS

REVISIONS: SEE SHEET 3